

**New
model!**

RODIN^{4D}

M4D Scan

**Faster, lighter,
more portable**

New technology.
Fully integrated with Rodin4D.

> Portable and quick to set up

Its small size makes it easily portable from one place to another.
In less than 5 minutes, it is installed and ready to scan in any kind of environment.

> Accurate and constant

The scanner offers an optimal precision for every body part, in addition to tolerating slight movements from the patient. You are assured of consistent results regardless of who performs the scan and in what conditions.

> Versatile

It is possible to scan any body part, from head to toes, while providing a comfortable, clean and fast solution for both the patient and the clinician.

> Fast acquisition

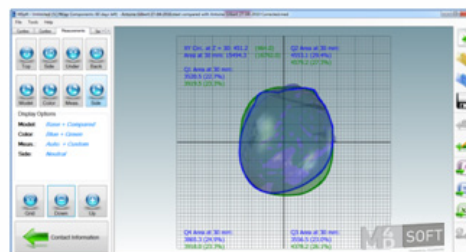
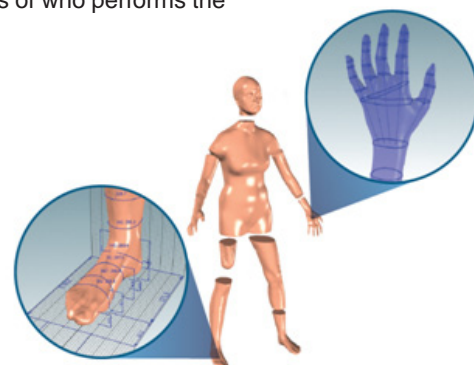
It takes only 40 seconds to scan a foot and 90 seconds to scan a torso or a leg.

> Easy to learn and use

No basic knowledge is required and only 2 hours of training is necessary.
The intuitive and user-friendly interface as well as the real time display of the scan makes scanning accessible to anyone.

> Automation

- Automatic post-treatment of the image
- Automatic measurements
- Automatic Word report
- Comparison function



RODIN^{4D}

Parc Le Biogalien - Bâtiment B
27 Allée Charles Darwin
33600 Pessac - France

www.rodin4d.com
info@rodin4d.com

Tel: +33 (0)5 56 47 77 13
Fax: +33 (0)5 56 47 77 14


PV Engineering Co.

Θηβών 152 & Παπάγου 1, ΤΚ 18233
Αγ. Ι. Ρέντης, Πειραιάς
Τηλ: 210 490 4300 Fax: 210 490 4390
info@pv-e.com, www.pv-e.com